



**PR05002P, PR05057P, PR05030P – 911, 914 A-arms bushings set installation instructions**



| <b>SET includes:</b>   | <b>Tools required:</b>   |
|--|--|
| <ul style="list-style-type: none"><li>✓ 4x bushing</li></ul> | <ul style="list-style-type: none"><li>✓ Press (hydraulic 20T)</li><li>✓ Sandpaper</li><li>✓ Cleaner/degreaser</li><li>✓ Rubber adhesive</li><li>✓ Lubricating oil</li><li>✓ Angle gauge</li><li>✓ <a href="#">PR98071P – A-arm bushings fitting tool</a></li></ul> |

Difficulty level:



**Procedure:****Bushing installation:**

1. Prepare the front and rear metal mounts for bushings insert. Use a piece of sandpaper to sand down the edges on all metal mounts as marked:



2. Clean and degrease all the sanded edge surfaces and degrease the silent bloc edges as shown:



3. Lubricate the inner surfaces of both front and rear metal mounts (be careful not to lubricate the edge to be glued):



4. Apply rubber adhesive to bushing edge:



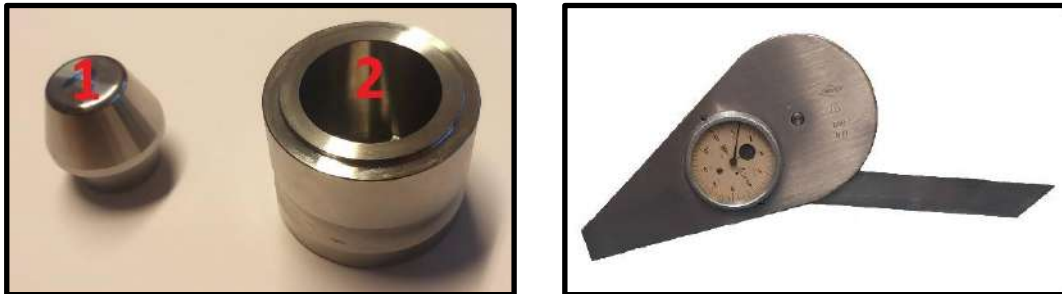
5. Press the bushings into the front and rear metal mounts with the help of hydraulic press:



6. Once all the bushings are pressed in the metal mounts continue with pressing the metal mounts with bushings on the A-arm.

### Installing metal mount with bushings on the A-arms:

7. This operation requires the use of toolkit [PR98071P](#) and the use of angle gauge.



8. Insert tool 1 from toolkit [PR98071P](#) into the torsion bar opening of the A-arm:



9. Lube tool 1 from [PR98071P](#) tool kit and the A-arm part where metal mount with bushing will be pressed on. Also lube the bushings inner surfaces:



10. Before pressing the metal mounts with bushings onto the A-arms (in the hydraulic press) use some metal guide for the front part of the A-arm (as shown on the photo):



11. Use tool 2 from toolkit [PR98071P](#) from the upper side of the flange to press the metal mount with bushing onto the A-arm. Make sure to keep the right orientation of the metal mount – flange oriented downwards:



12. When pressing the metal mount on the A-arm make sure the angle between A-arm and the metal mount ear is 20 degrees.



- 13.** You can insert a screwdriver in a U-shaped loop of the rear metal mount to re-adjust the rear metal mount position. Match the required angle while the A-arm is still in the press.



- 14.** When the bushings with metal mounts are pressed on and the angle is right, leave A-arm in the press for approx. 5 minutes since the rubber bushing needs some time to seat properly.



- 15.** Lubricate the inner surface of the front bushing:



- 16.** Lubricate the front part of the A-arm:



- 17.** Make sure to keep the right orientation of the front metal mount. The arrow (marked with red circle) on the metal housing should point in driving direction:



- 18.** The angle of the front metal mount ears should be parallel with flat end of the U-shaped loop on the rear metal mount.





19. Press the metal mount with bushing onto the a-arm and keep pressed for approx. 5 minutes for the rubber to seat properly.



20. Measure the distance from the rear end of A-arm to front flange edge. It should be 44,5cm (17,52 inch) for a perfect fit.



21. Repeat the procedure with the other A-arm.

Thank you for your purchase!



[www.prekom-usa.com](http://www.prekom-usa.com)

[www.prekom.si](http://www.prekom.si)

